

### Specifications

Model	SX-135 XC	
<b>Measurements</b>	<b>Metric</b>	<b>US</b>
Working height maximum*	43.15 m	141 ft
Platform height maximum	41.15 m	135 ft
Horizontal reach maximum	27.43 m	90 ft
Below ground reach	6.00 m	19 ft 8 in
<b>A</b> Platform length	0.91 m	3 ft
<b>B</b> Platform width	2.44 m	8 ft
<b>C</b> Height - stowed	3.05 m	10 ft
<b>D</b> Length - stowed	19.76 m	64 ft 10 in
Length - transport (jib tucked under)	13.28 m	43 ft 7 in
<b>E</b> Width - axles retracted	2.49 m	8 ft 2 in
Width - axles extended	3.94 m	12 ft 11 in
<b>A</b> Wheelbase - axles retracted	4.11 m	13 ft 6 in
Wheelbase - axles extended	4.11 m	13 ft 6 in
<b>G</b> Ground clearance - center	0.38 m	1 ft 3 in
<b>Productivity</b>		
Lift capacity	300 kg / 454 kg	660 lb / 1,000 lb
Platform rotation	160°	160°
Vertical jib rotation - up/down	70° / 55°	70° / 55°
Turntable rotation	360° continuous	
Turntable tailswing - axle retracted	1.14 m	3 ft 9 in
Turntable tailswing - axle extended	1.70 m	5 ft 7 in
Drive speed - stowed	4.3 km/h	2.7 mph
Drive speed - out of stowed	0.65 km/h	0.4 mph
Gradeability - stowed**	35%	35%
Turning radius - axle retracted: inside	8.03 m	26 ft 4 in
outside	9.96 m	32 ft 8 in
Turning radius - axle extended: inside	2.90 m	9 ft 6 in
outside	6.17 m	20 ft 3 in
<b>Controls</b>	12 V DC proportional	
<b>Tyres</b>	445D50/710HD	

### Power

Power source	Deutz TCD2.2 L3 turbo diesel 3-cylinder 74hp (55 kW) Stage V Deutz TD 2011 L04i turbo diesel 4-cylinder 74hp (55kW) Stage IIIA	
Auxiliary power unit	12 V DC	12 V DC
Hydraulic tank capacity	227 L	60 gal
Fuel tank capacity	151 L	40 gal

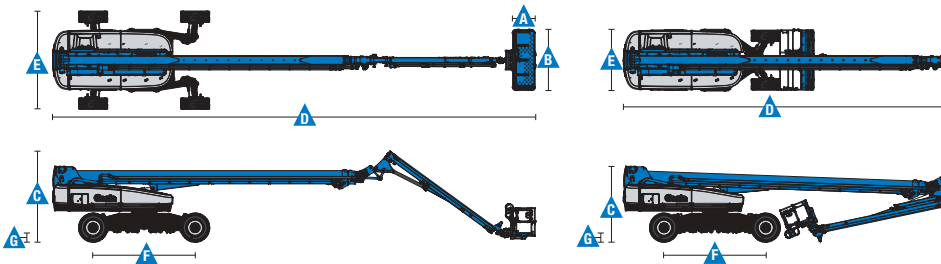
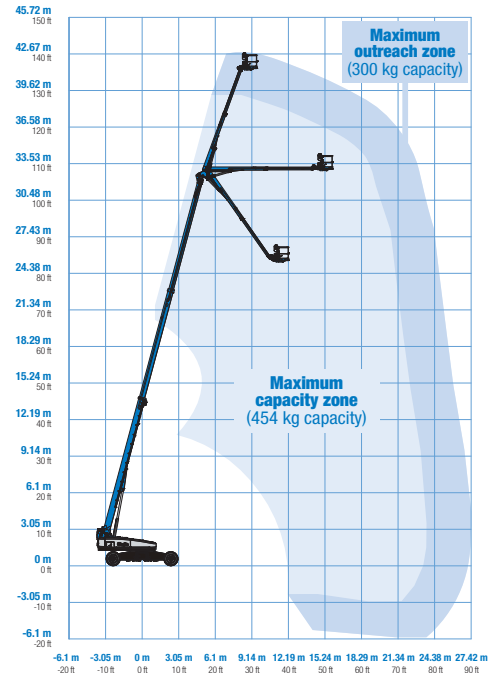
### Weight\*\*\*

4WD	21,546 kg	47,500 lb
-----	-----------	-----------

### Standards Compliance

EU Directives: 2006/42/EC - Machinery  
(harmonized standard EN 280:2013+A1:2015);  
2004/108/EC (EMC); 2000/14/EC (Outdoor Noise)

### Range Of Motion SX-135 XC



\* The metric equivalent of working height adds 2 m to platform height. U.S. adds 6 ft to platform height.

\*\* Gradeability applies to driving on slopes. See operator's manual for details regarding slope ratings.

\*\*\* Weight will vary depending on options and/or country standards.

## Features

Standard Features	Easily Configured To Meet Your Needs	Options & Accessories
-------------------	--------------------------------------	-----------------------

### Measurements

#### SX-135 XC

- 43.15 m (141 ft) working height
- 27.43 m (90 ft) horizontal reach
- 300 kg (660 lb) unrestricted and 454 kg (1,000 lb) restricted lift capacity

### Productivity

- Self-leveling platform
- 160° Hydraulic platform rotation
- Proportional joystick controls
- Hydraulic oil cooler
- Thumb rocker steering
- Drive enable
- Chassis tilt drive function cut-out
- AC power to platform
- Horn
- Hour meter
- Tilt alarm
- Descent alarm
- Alarm package
- 360° continuous turntable rotation
- Positive traction 4WD
- Two speed wheel motors
- Four wheel high angle steer
- Four steering modes: front, rear, crab and coordinated
- On board full diagnostics and engine monitoring display
- Ground control box cover
- Telematics-Ready Connector
- Hydraulic oil cooler
- Lift Connect™ Telematics
- Lift Guard™ Contact Alarm
- Lift Tool™ Work Tray

### Power

- All engines are emissions compliant
- 12 V DC auxiliary power
- Anti-restart engine protection
- Auto engine fault shutdown
- Intake air heater
- Engine gauge display

### Platform Options

- Steel 1.83 m (6 ft) dual-entry platform with side swing gate
- Steel 2.44 (8 ft) tri-entry platform with side swing gate (standard)

### Jib

- 5.48 m (18 ft) to 9.14 m (30 ft) Telescoping Jib-Extend™

### Engine Options

- Deutz TCD2.2 L3 turbo diesel 3-cylinder 74hp (55 kW) Stage V
- Deutz TD 2011 L04i turbo diesel 4-cylinder 74hp (55kW) Stage IIIA

### Drive/Steer

- 4 x 4 (standard)
- 4 wheel steer (standard)

### Axles

- Mini X-chassis™ extendable axles (standard)

### Tyres

- Rough terrain foam-filled (standard)



### Options & Accessories

#### Productivity Options

- Half-mesh platform inserts
- Platform auxiliary top rail
- Hostile environment package<sup>(1)</sup>
- Dual axis joystick steering
- Work lights package (2 platform mounted work lights)<sup>(1)</sup>
- Biodegradable Hydraulic Oil
- Airline to Platform<sup>(1)</sup>
- Aircraft Protection Kit<sup>(1,4)</sup>: platform foam padding and padded disable system
- Chassis tilt lift function cut-out
- Lockable platform control box cover
- Track & Trace<sup>(2)</sup> (GPS unit providing machine location & operating information)
- Operator Protective Structure<sup>(3)</sup>
- Genie® Tech Pro™ Link Hand-held Diagnostics Device

#### Power Options

- AC generator packages (110V/60Hz, 110V/50Hz, 240V/50Hz) 3000W, hydraulically driven
- Cold Weather Package<sup>(1)</sup>
- Diesel scrubber/spark arrestor muffler (catalytic muffler), Stage IIIA engine only
- Intake air pre-cleaner

<sup>(1)</sup> Factory-fit option only

<sup>(2)</sup> Includes a first 2 years subscription

<sup>(3)</sup> Aftermarket only

<sup>(4)</sup> Requires 1.83 m (6 ft) platform, not available with any other platform, nor platform option